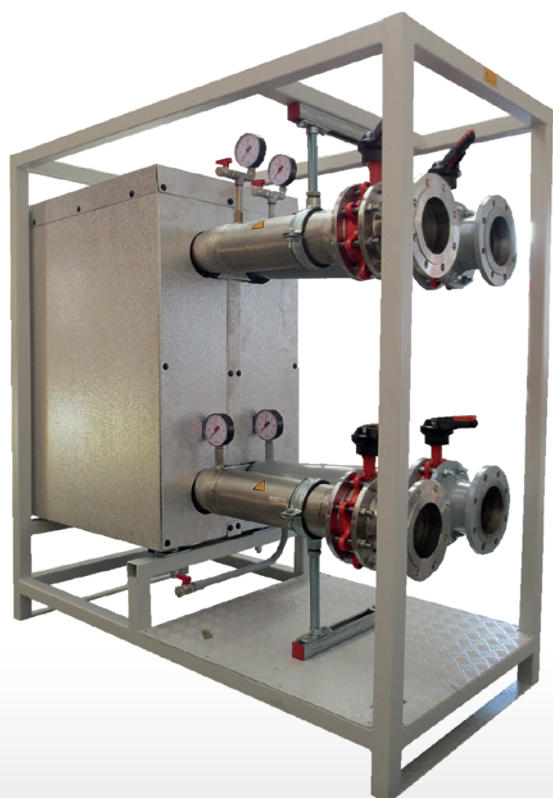


Mobile accessories | System separator

HOTFLOW MST 2.500

ArtikelNr.: HM2000000245

Areas of application:



| Type | HOTFLOW MST 2.500 | |
|------------------------|-----------------------------|---------------|
| Transmission power | 2,500 kW | |
| | primary | secondary |
| Infeed temperature | 90° C | 20° C |
| Discharge temperature | 70° C | 45° C |
| Mass flow | 107,475 kg / h | 85,980 kg / h |
| Pressure loss | 0.48 kPa | 0.34 kPa |
| Medium | water | |
| Connection | DN125 PN6 (stainless steel) | |
| Dimensions (L x W x H) | 1,600 x 800 x 1,650 mm | |
| Weight | Tare weight: approx. 500 kg | |

Subject to technical changes - only for information

Your advantages

- Can be used with different media
- No problems at differing pressure conditions
- Suitable for outdoor use

Mobile plate heat exchangers in bolted design for the system separation of two media.

Output approx. 2,000 kW depending on medium and/or temperature conditions. The mobile system separation units are particularly suited for use in the renovation of district heating transfer stations or

failure of process water treatment. In addition, with our HOTFLOW appliances, difficult pressure conditions, for example in high-rise buildings or with lawn heating, can also be overcome. The connection is done as usual via our flexible hose connections HOTFLEX.